

## Cable Rack 16 Reels 100040 & 100042



A newly designed Cable Rack made by G. Engineering. Because of the new design, the cable rack is stronger and easier to mount cable reels or to exchange cable reels. The cable rack is designed to hold 16 reels up to and with 50mm<sup>2</sup>. The lifting eye has been in such a way that it can withhold 50% more then the maximum weight of the cable rack.

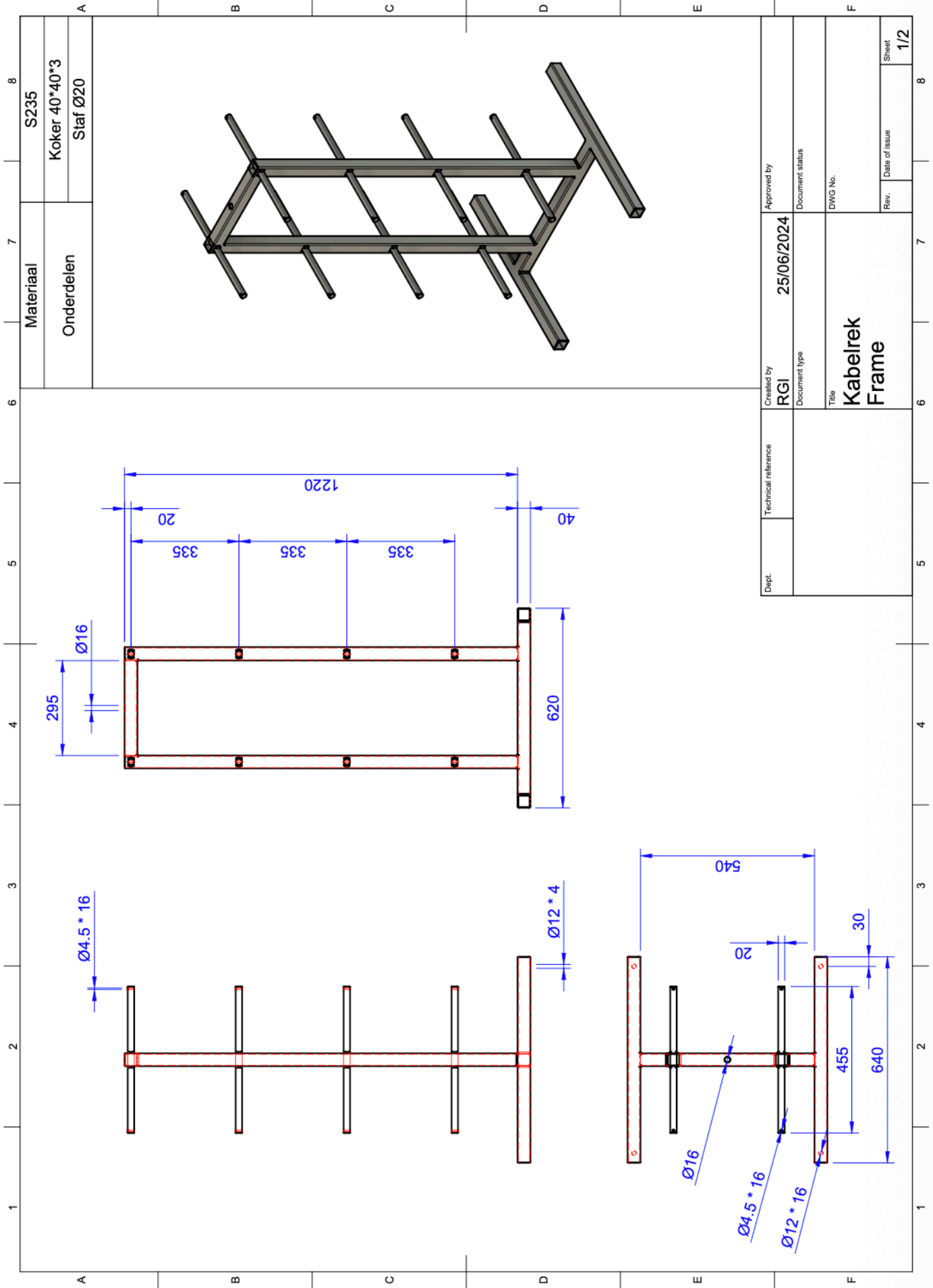
### Technical information

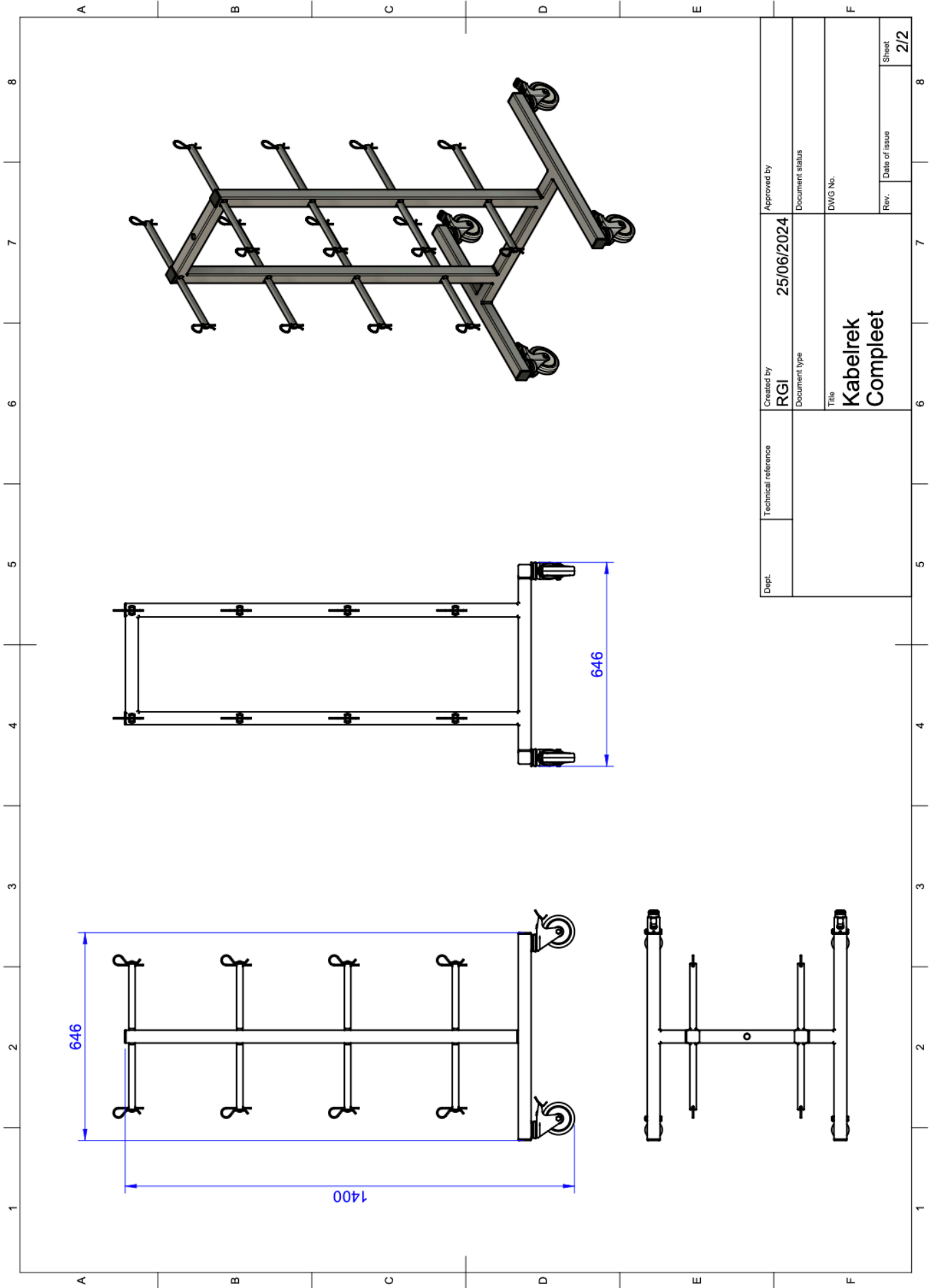
Lifting "eye" :	Hexagon bolt M16x60, 10.9	In accordance ISO4017
:	Ring M16	In accordance DIN 125
:	Eye nut M16	In accordance DIN582

### Dimensions

Dimension Frame	BxD 62 x 62cm
Dimension with wheels	BxDxH 66 x 64 x 138 ± 1cm wheels protrude 15mm outside the frame
Load capacity	500kg
Equipped with 16 split pins for securing the reels	
Article number lifting eye	:1000041
Article number black coated	:1000042

Check the following pages for the technical drawings with dimensions





Dept.	Technical reference	Created by RGI	Approved by 25/06/2024	Document status	Rev.	Date of issue	Sheet
		Document type		DWG No.			2/2
		Title <b>Kabelrek Compleet</b>					